

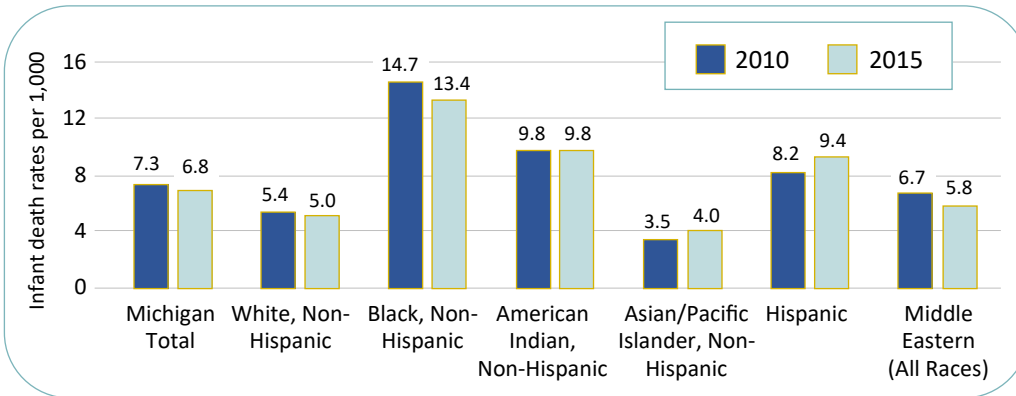


# 2017 Right Start: Annual Report on Maternal and Child Health

## Infant death rates decline in Michigan, other trends raise concerns

### MICHIGAN

Rising infant death rate for Hispanics, more than double rates for African-Americans compared to Whites.

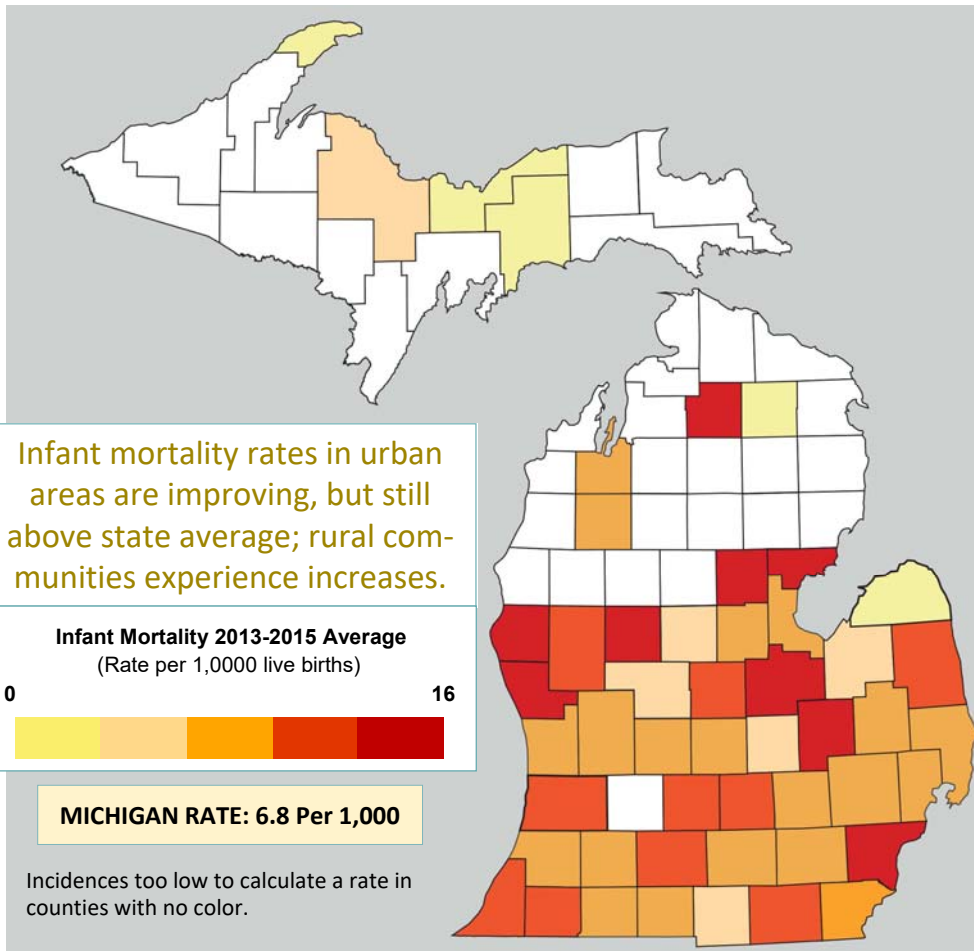


### Right Start—An Annual Report on Maternal and Child Health

A mother's health is inextricably connected to her child's immediate and long-term health and overall well-being, including educational progress.

#### Race and Place Matter.

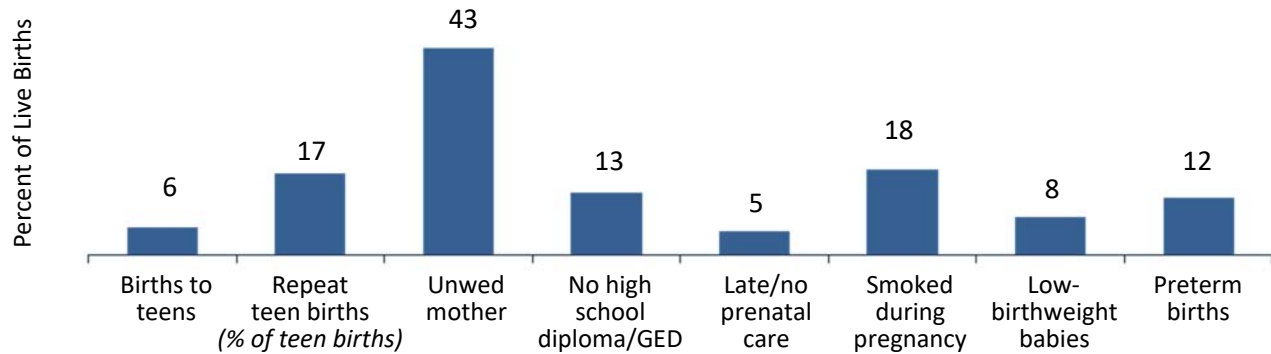
Women of color have experienced institutional and structural barriers leading to inequitable health. Women that live in areas without reliable transportation to visit a doctor and who do not have clean and safe communities to reduce exposure to harmful toxins and stress are at greater risk of unhealthy birth outcomes.



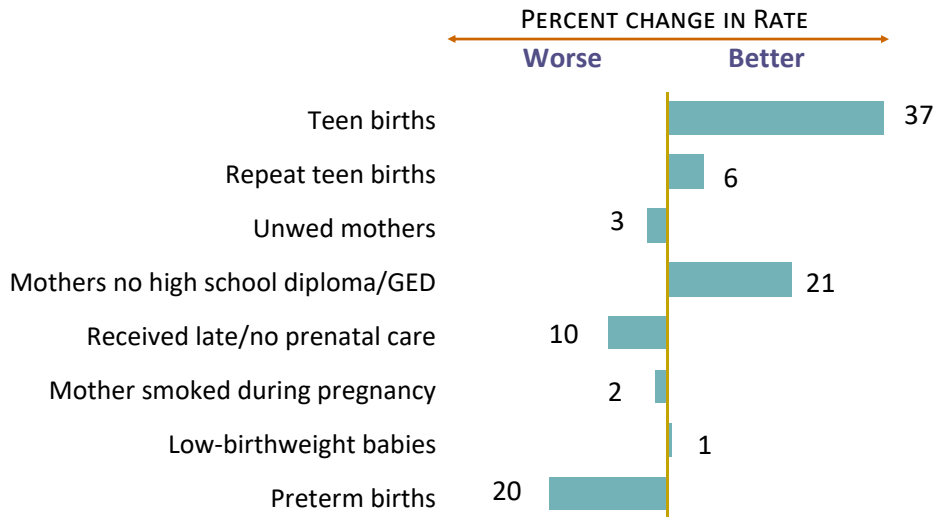
Source: Michigan Department of Health and Human Services, Division for Vital Records and Health Statistics

# MICHIGAN

## Status of Maternal and Child Health (2013-15 Avg.)



## Trends in Maternal and Child Well-Being 2010 vs. 2015



## Maternal and Infant Well-Being 2010 vs. 2015

Indicators (% of live births)	2010		2015		Percent Change
	Number	Percent	Number	Percent	
Births to women under age 20	11,687	10	7,131	6	-37
Repeat teen births (% of teen births)	2,091	18	1,203	17	-6
Births to mothers who...					
• are unmarried	48,668	41	48,534	43	3
• have no high school diploma/GED*	18,773	16	14,262	13	-21
• received late/no prenatal care*	5,665	5	6,016	5	10
• smoked during pregnancy*	21,246	18	20,896	18	2
Low-birthweight babies ( <i>less than 5.5 lbs.</i> )	9,957	8	9,533	8	-1
Preterm births ( <i>less than 37 weeks gestation</i> )	11,928	10	13,827	12	20

N/A Rate could not be calculated because of low incidence of events or unavailable data.  
 \*These indicators have one-year base data. Other measures use 3-year averages: 2008-2010 and 2013-2015.  
 Note: Percentage change is based on the rate not the number.  
 Source: Michigan Department of Health and Human Services, Division for Vital Records and Health Statistics

A negative change shows a decline or improvement.